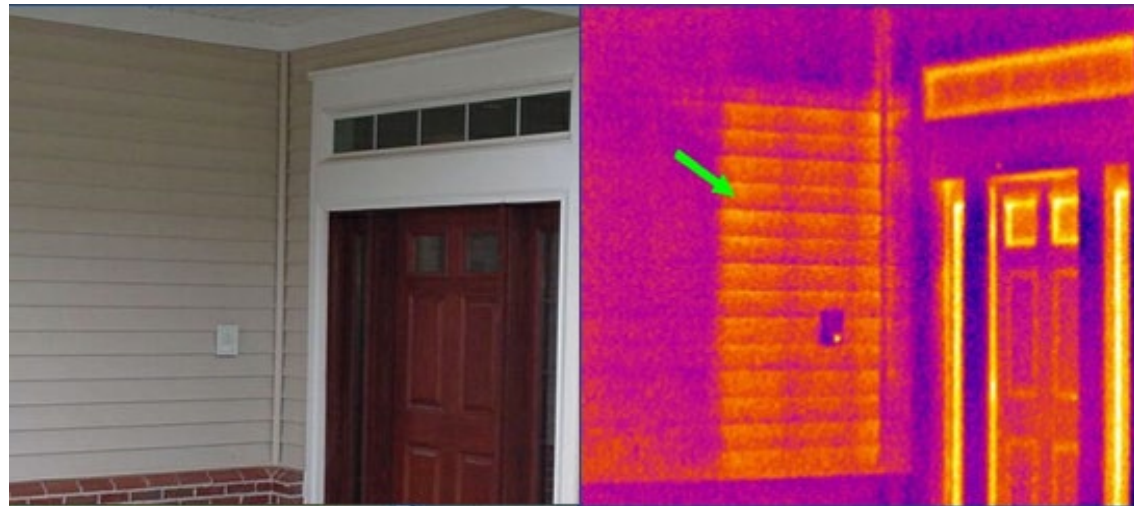


Air Barrier Installation

Improving Efficiency, Comfort, and Health in Existing Homes



Shower/Tub on Exterior Wall



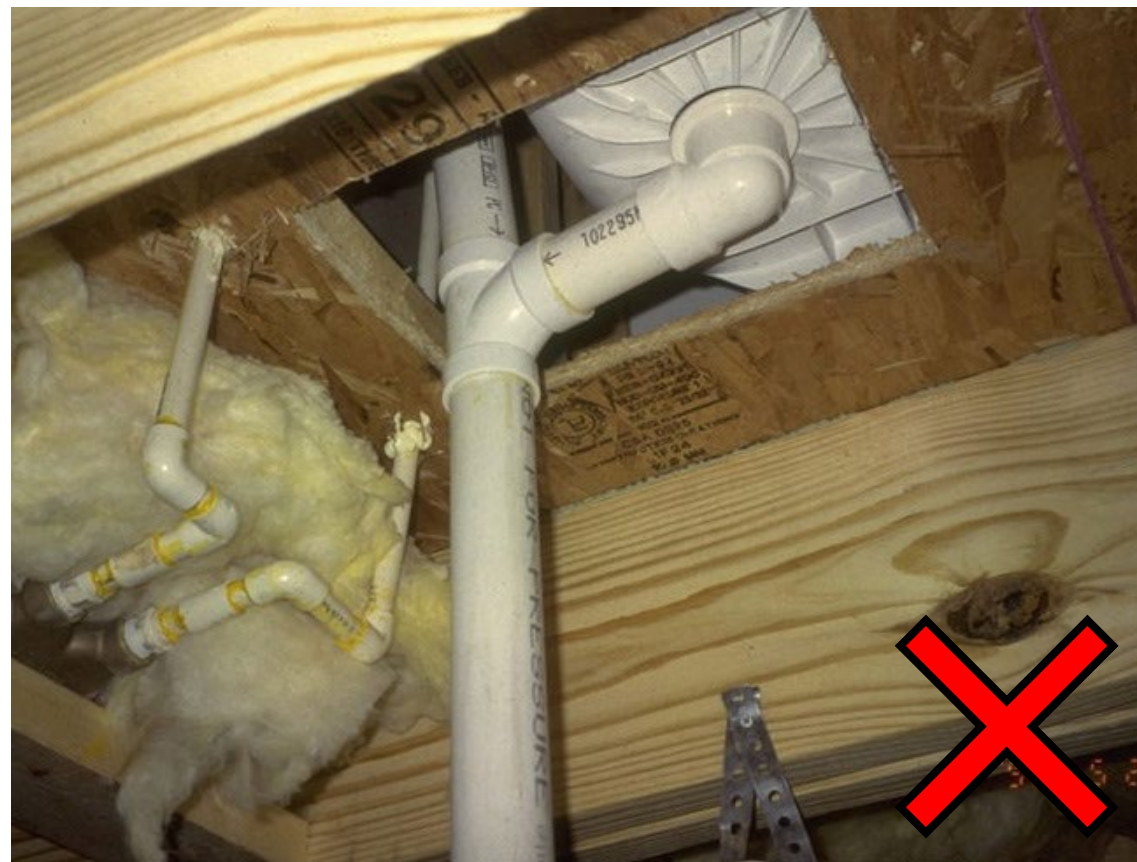
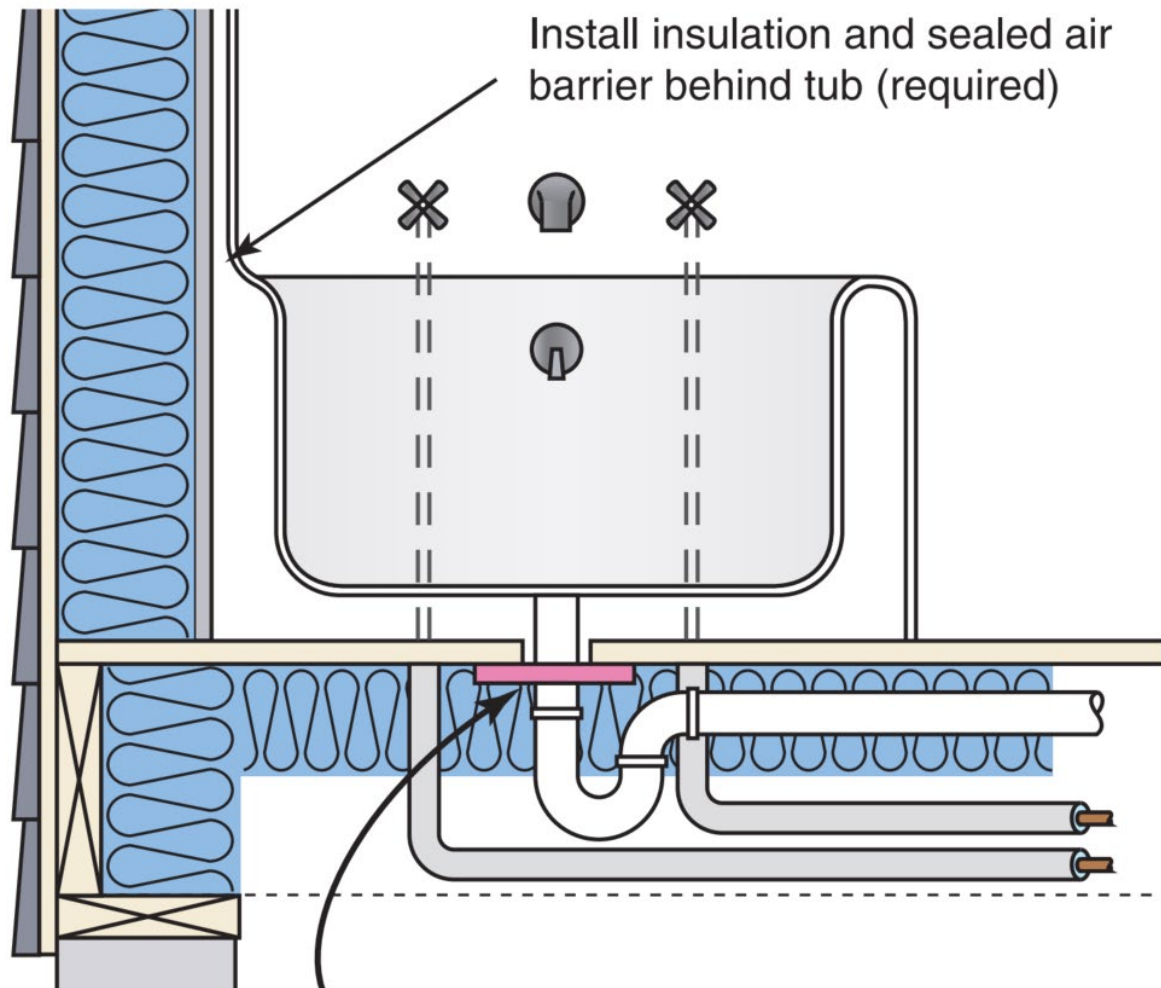
Shower/Tub on Exterior Wall

- Coordinate with your subcontractors so that insulation and air sealing details are not missed before it is too late!



Complete air barrier behind tub

Plumbing and wiring



Air Sealing Tub Drains



Cantilevered floor



Didn't Install Blocking
(Just Covered Over With Insulation)



Install expanding-foam sealant at perimeter gaps around rigid insulation.

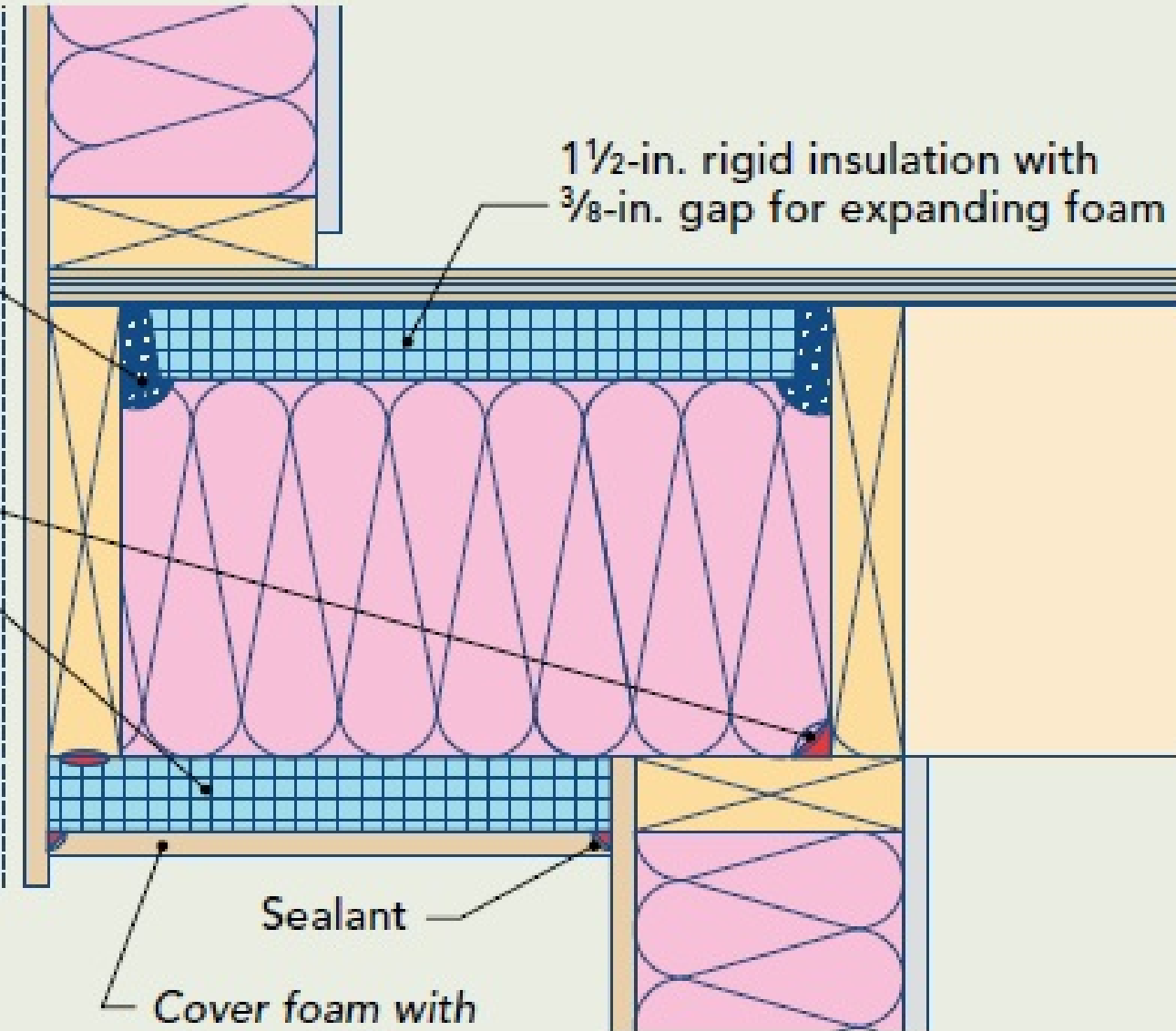
Continuous bead of sealant

1½-in. rigid insulation

1½-in. rigid insulation with 3/8-in. gap for expanding foam

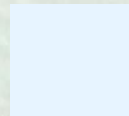
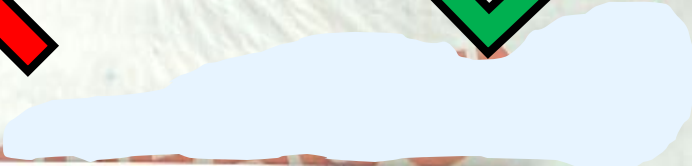
Cantilevered floor

The blocking above the bearing wall helps to define the home's air barrier, so each piece of blocking needs to be sealed at the perimeter with caulk or canned spray foam. As long as both layers of rigid foam are installed with attention to airtightness, this type of cantilevered floor performs well.



Sealant

Cover foam with plywood, fiber cement, or other solid soffit material.



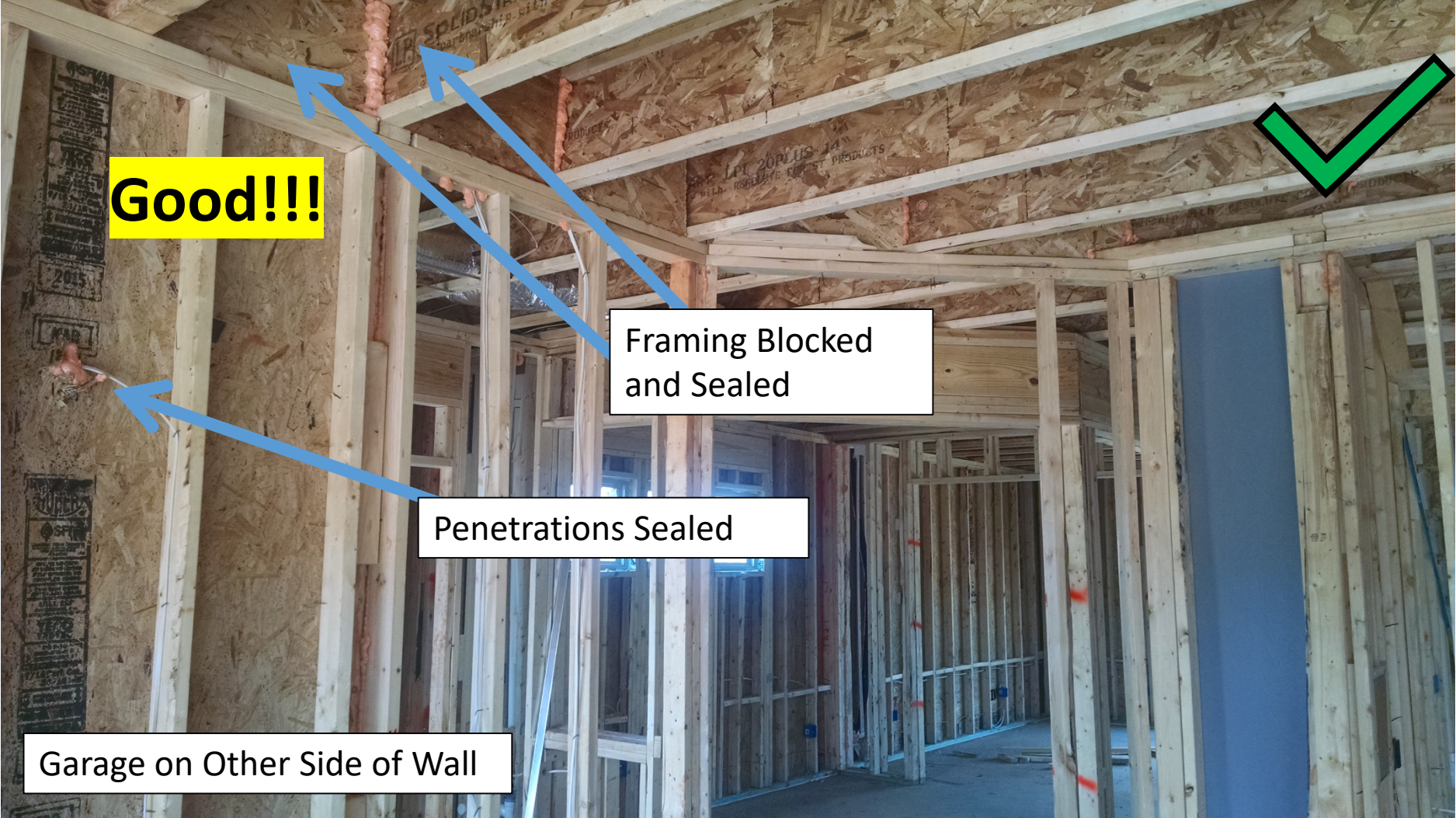
ES™
-2514
MADE IN USA



Garage Separation



Garage Separation



Chases are BIG Holes in the Envelope!

- First, cover with sheet material and seal
- Then insulate

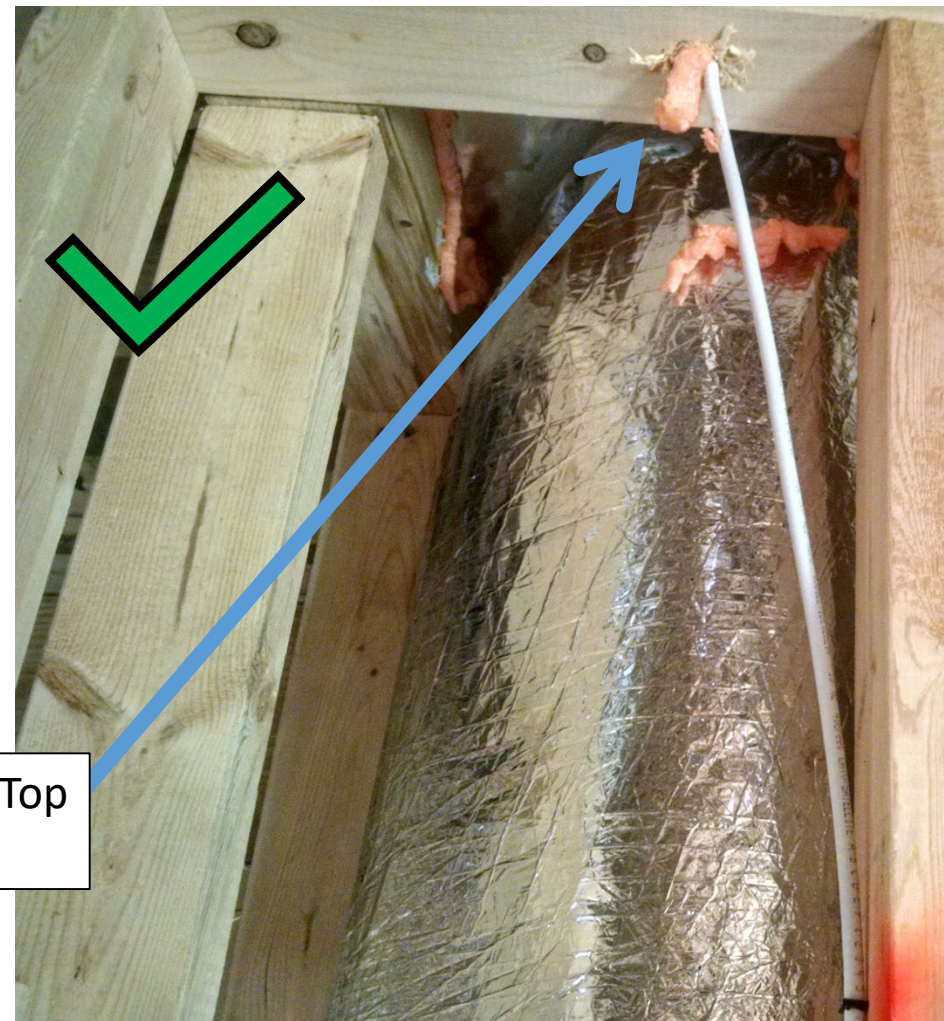
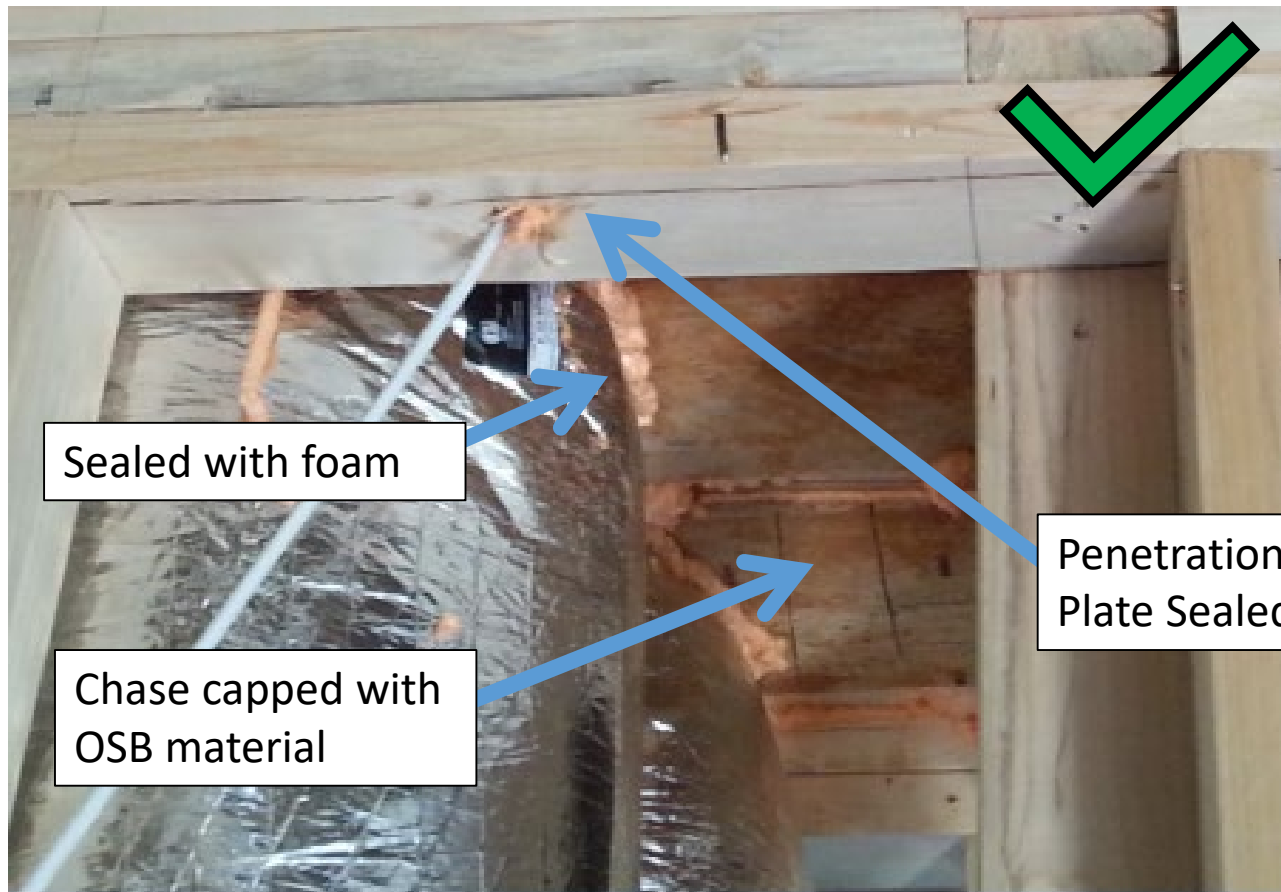


Duct Shafts

Cap chases with rigid material and seal tight around ducts or flue pipes



Duct Shafts

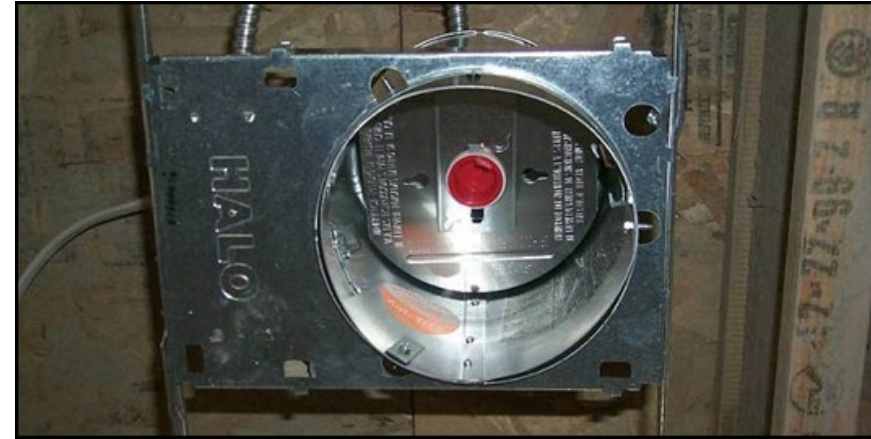


402.4.5 Recessed Lights

- Standard Can Light

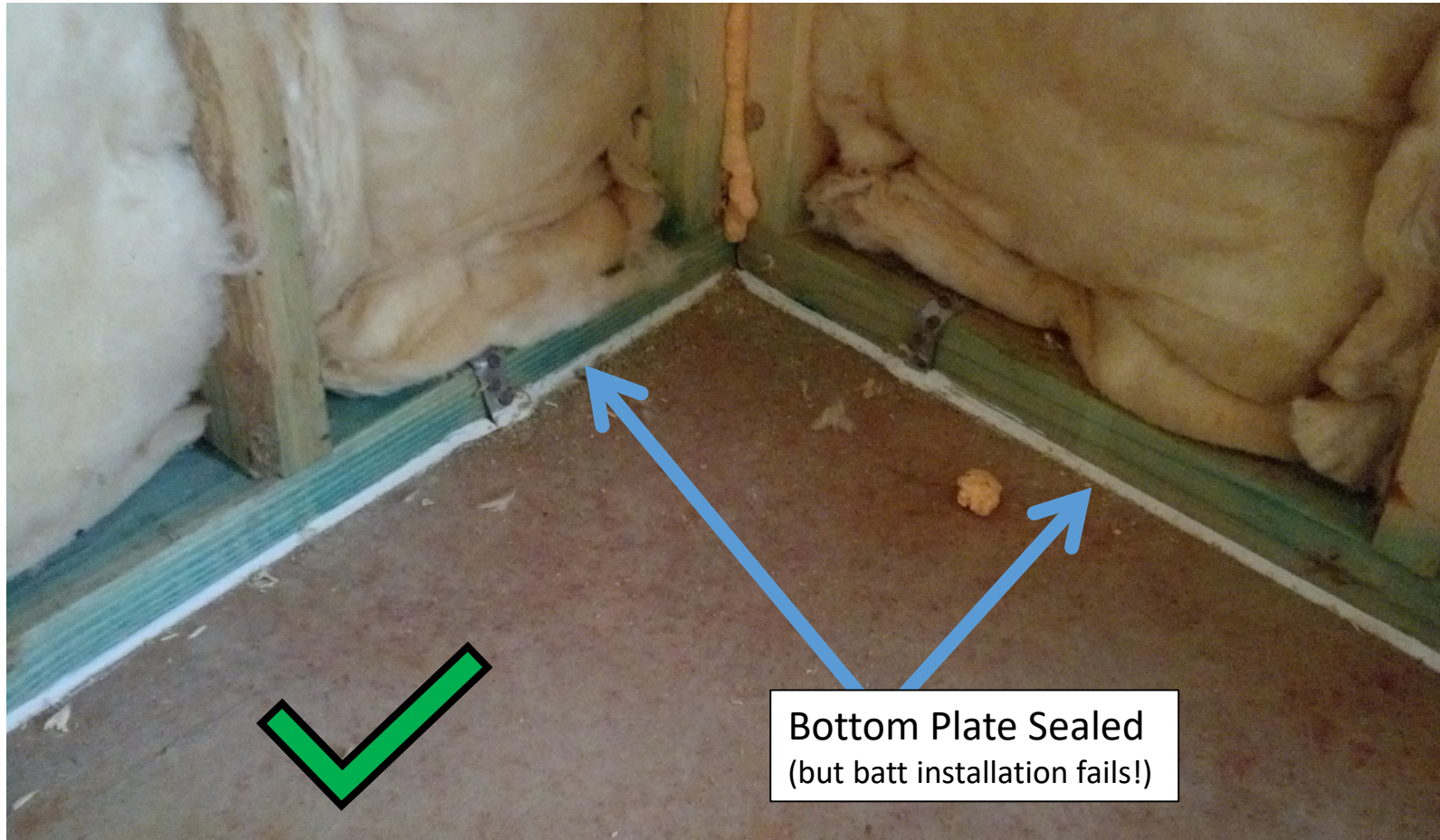


Airtight and IC Rated



- All recessed luminaires shall be labeled as having an air leakage rate not more than 2.0 cfm tested at 75 pa
- All recessed luminaires shall be sealed with a gasket or caulk between the housing and the interior wall or ceiling covering

Sill (bottom) plate



Dirty Carpet?!

- Dirty carpet on **exterior** wall indicates leak at wall sill plate
- On **interior** wall indicates wall leaking to and from attic



Whole House Fan



Whole House Fans





Unused Fireplace

- First, close flue damper
- Then use mastic and foam board to glue a ledger
- When dry, seal foam board to ledger with mastic & fasteners

