

Practical applications

The screenshot shows the Dew Point Calculator website from the Image Permanence Institute. The page features a navigation bar with 'Home', 'How to Use', and 'About' buttons. Below the header, there is a 'Welcome to the Dew Point Calculator' section with a brief explanation of its purpose. The main interface includes three sliders for Temperature (80), % RH (80), and Dew Point (73). To the right, a 'Preservation Evaluation' table displays risk levels for various decay types. At the bottom, there is a 'Record and Compare Values' table.

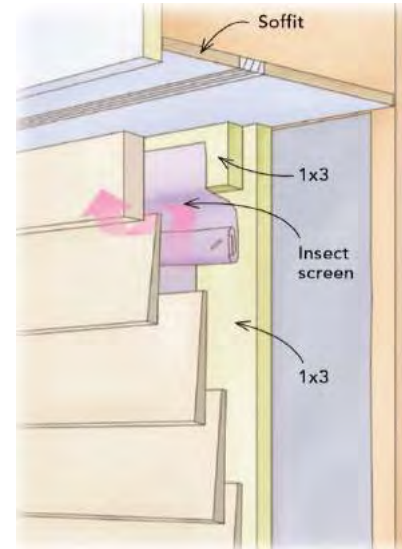
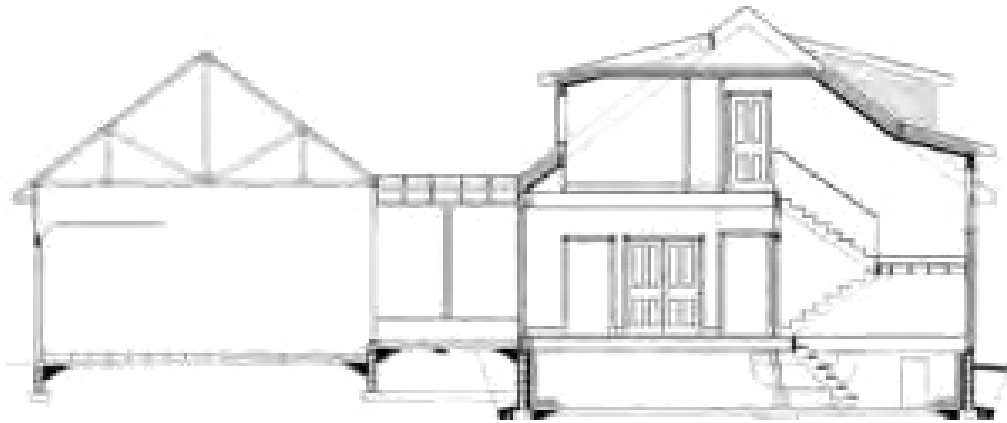
Type of Decay	Environment Rating	Preservation Metric
Natural Aging	RISK	PI 9
Mechanical Damage	RISK	% EMC 15.7
Mold Risk	RISK	Days to Mold 13
Metal Corrosion	RISK	% EMC 15.7

T	RH	DP	PI	Days to Mold	EMC

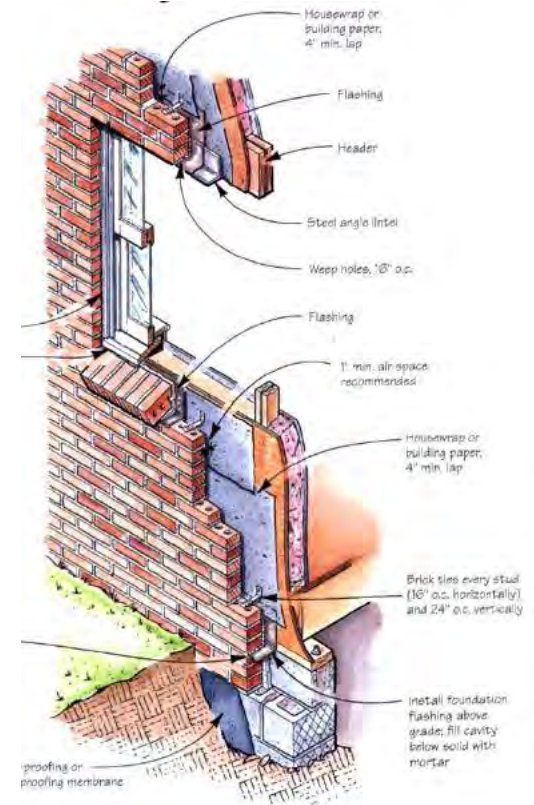
- www.dpcalc.org

Moisture transport

Drainage Planes and Cladding



CLADDING - BRICK VENEER



- Water shedding surface
- Gap / air space

BRICK VENEER



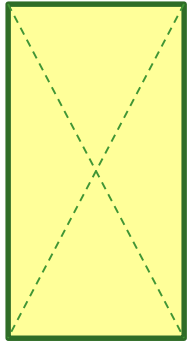
Weeps are critical



RAIN SCREEN / DRAINAGE PLANE



Housewrap: Details are Critical



Top Sash after trim removed



Rotten Header

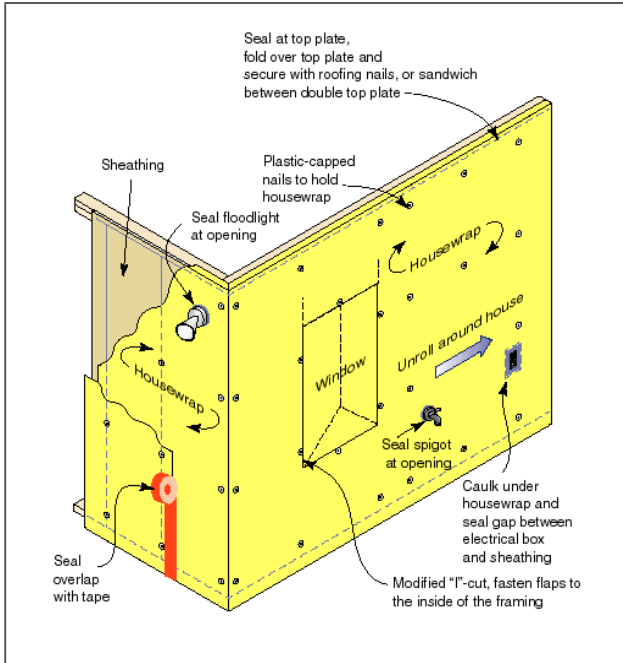
Windows (incorrectly) have flange over housewrap



See WRB factsheet for more details



Housewrap as a Weather Barrier



Technology Fact Sheet

WEATHER-RESISTIVE BARRIERS

How to select and install housewrap and other types of weather-resistant barriers

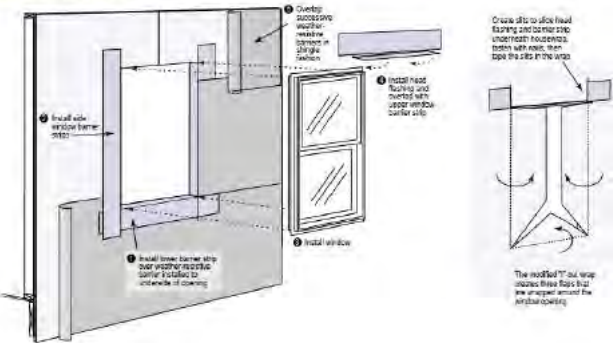
INTRODUCTION

Weather-resistant barriers are a part of exterior

WHEN AND HOW TO USE WEATHER-RESISTIVE BARRIERS

An asset of a professional design and construction

FLASHING WINDOW OPENINGS



Managing Bulk Moisture – flashing



Flashing must be integrated with wall and roof drainage plane surfaces

No Weather Barrier

- Rotted siding
 - Air leakage
 - Wicking



Alternative WR Barriers

- WRB pre-attached to sheathing



Fluid-Applied Weather Resistive Barrier



Retrofit: Lap Siding nailed directly to studs



Plywood on
boarded up
doorway



Siding Drainage Plane Retrofit



Siding Drainage Plane Retrofit

