

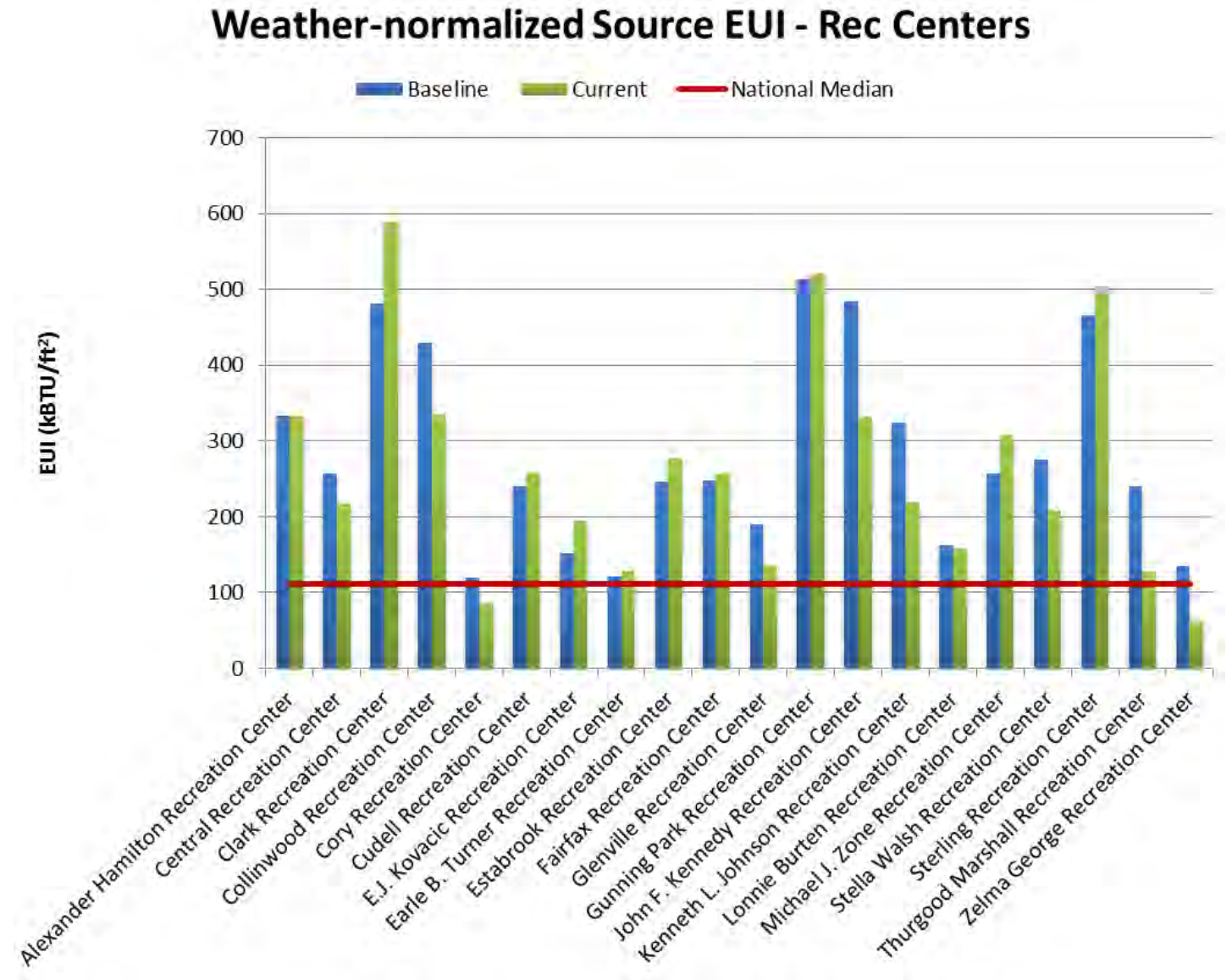


Capital Improvements

Utilizing Benchmarked Data

Data Utilization for Capital Improvements

- Comparative EUI data used for project prioritization
- Building trends used for determining project scope
- Sustainability reviews for new projects
- Ongoing performance tracking for energy efficient equipment



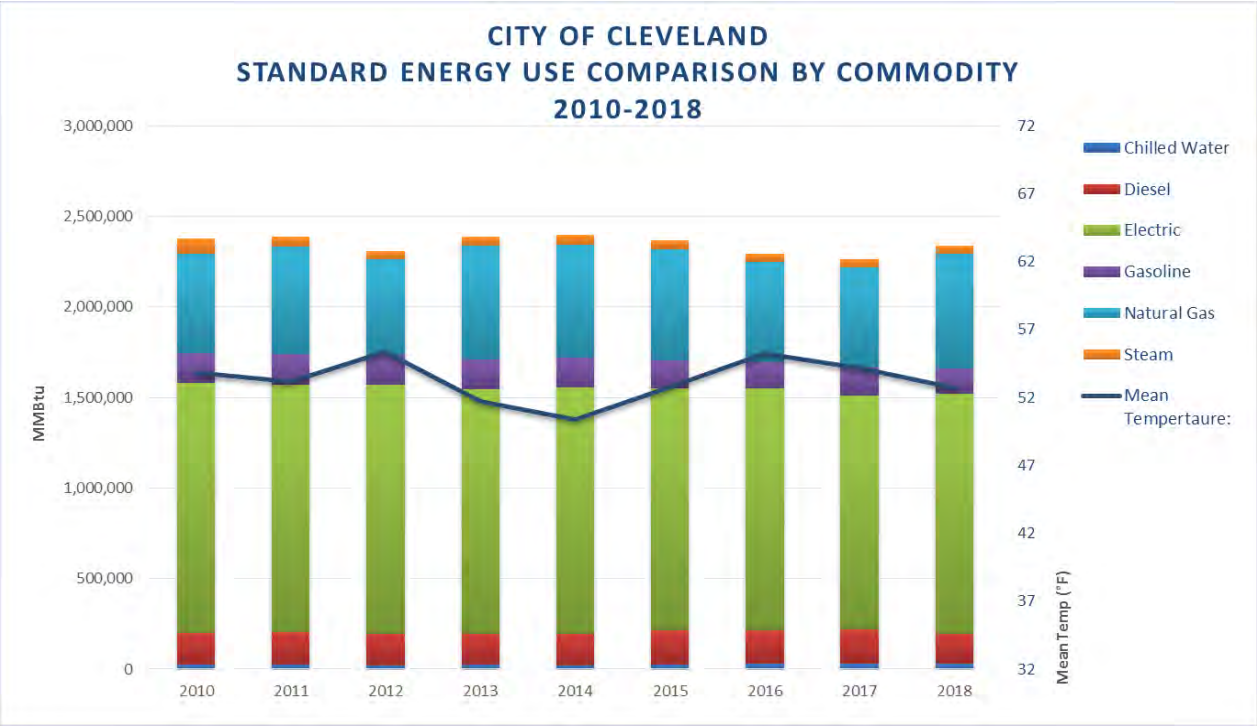
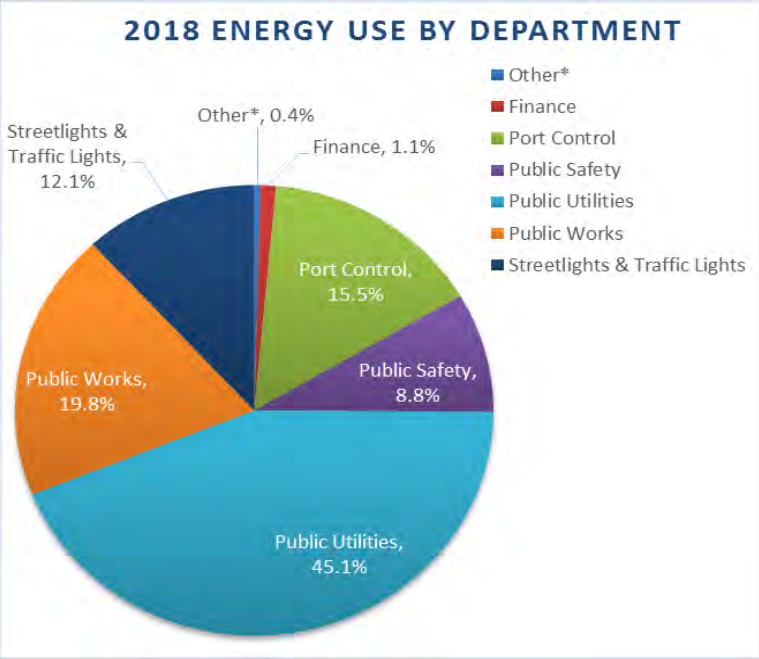
Internal and External Reporting

Utilizing Benchmarked Data



Energy and Utility Data Management Report

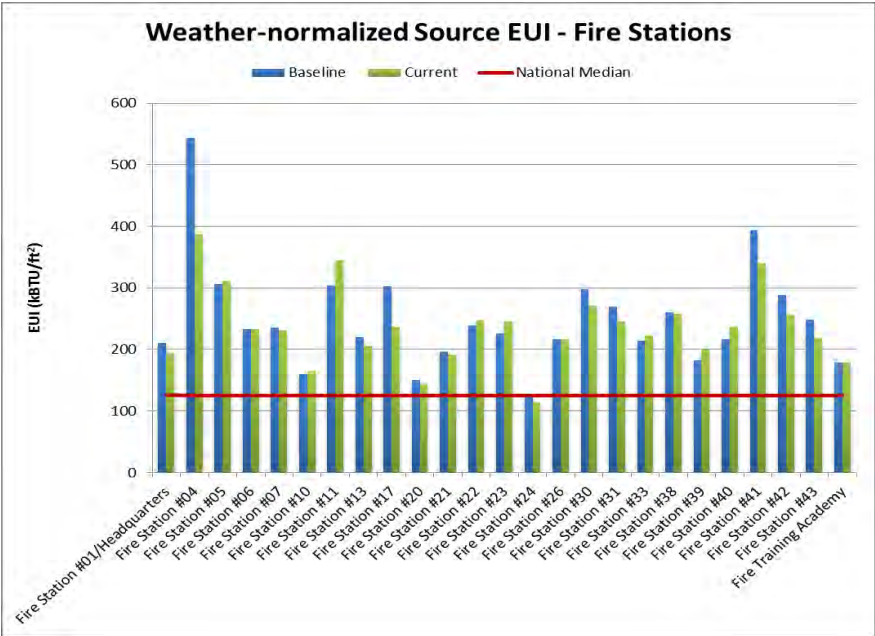
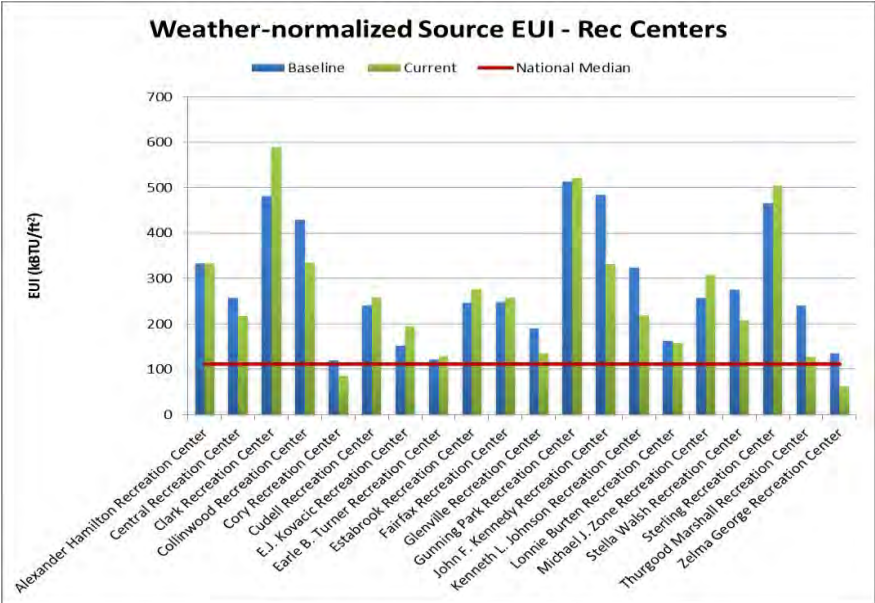
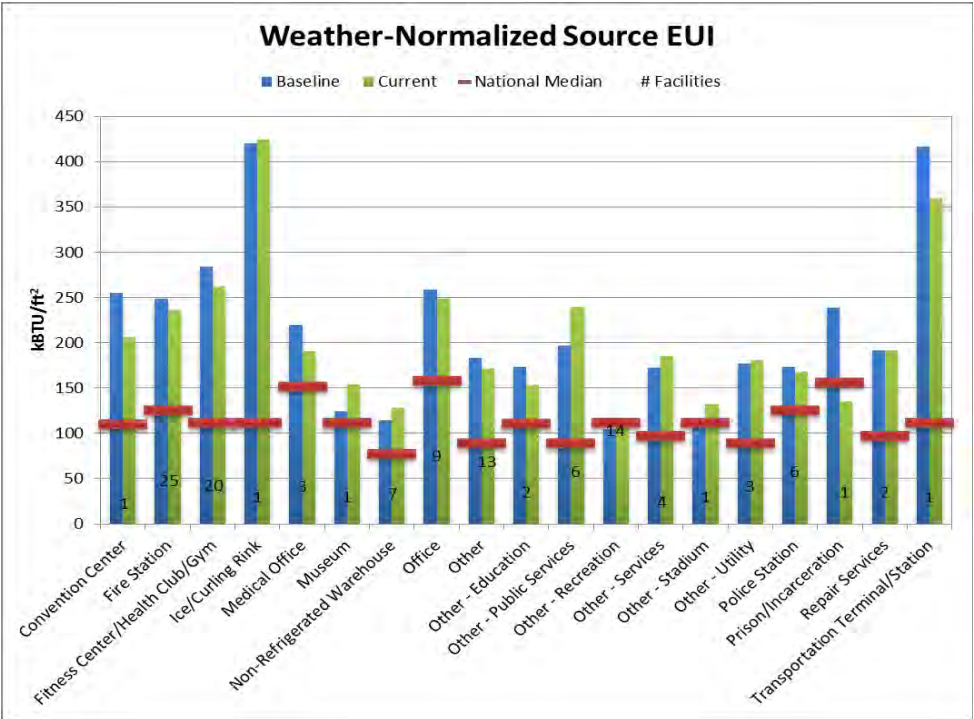
Citywide, departmental, facility-level trends



	2010	2017	2018
Overall Energy Consumption (MMBTU)	2,377,396	2,292,283	2,337,900
Weather Normalized Energy Consumption (MMBTU)	2,375,060	2,272,326	2,338,437
Overall Energy Costs	\$59,671,135	\$57,330,297	\$56,186,934
Energy Use Intensity (EUI) (kBtu/sq. ft.)	193	190	180

Energy and Utility Data Management Report

Energy Use Intensity (EUI)



DOE Better Building Challenge

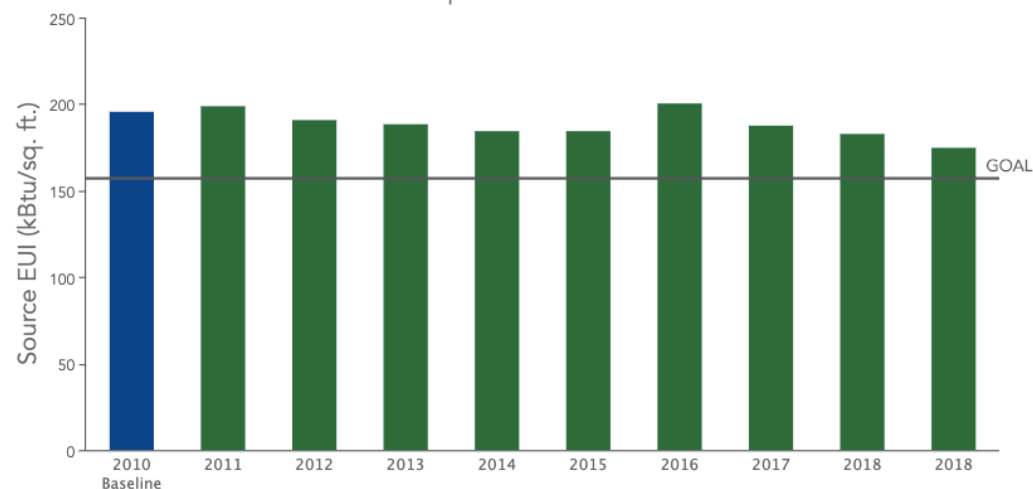
114 participating facilities
4.5 million sq ft

ENERGY PERFORMANCE

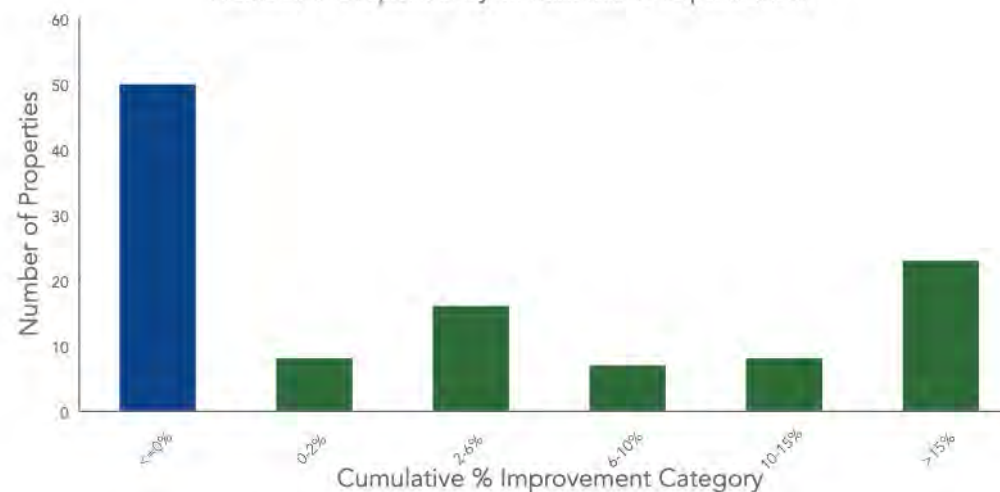
Cumulative (vs. Baseline)	11%
Annual (2019)	4%



EUI and % Improvement vs. Baseline

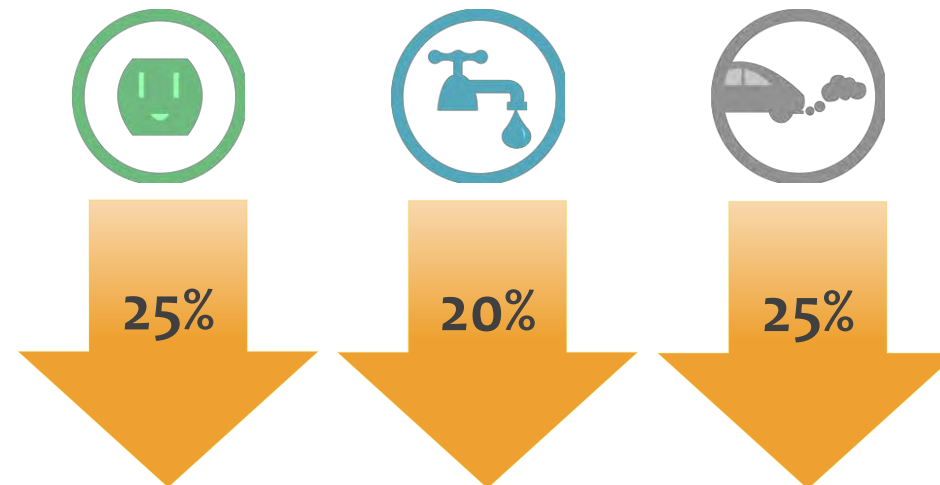
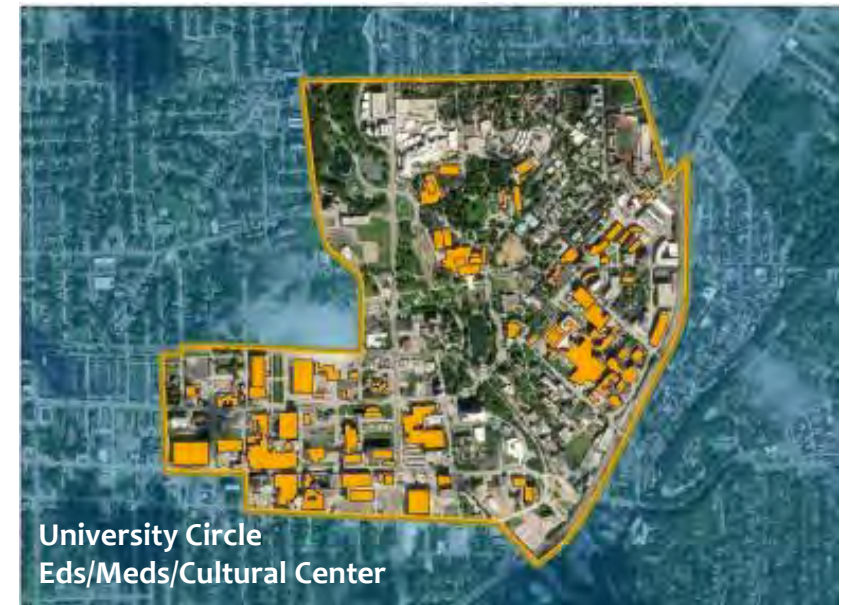


Number of Properties by Cumulative % Improvement

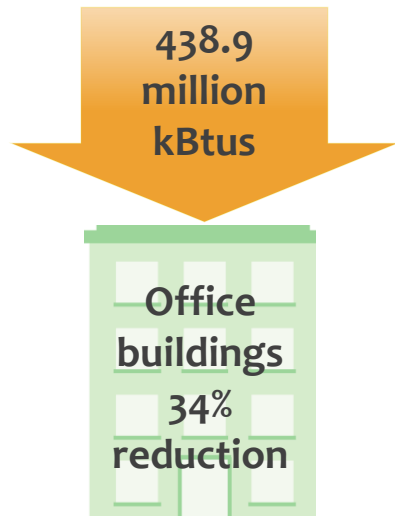


Cleveland 2030 District

- 257 facilities
- 62 million sq ft
- 56% participation in 2019

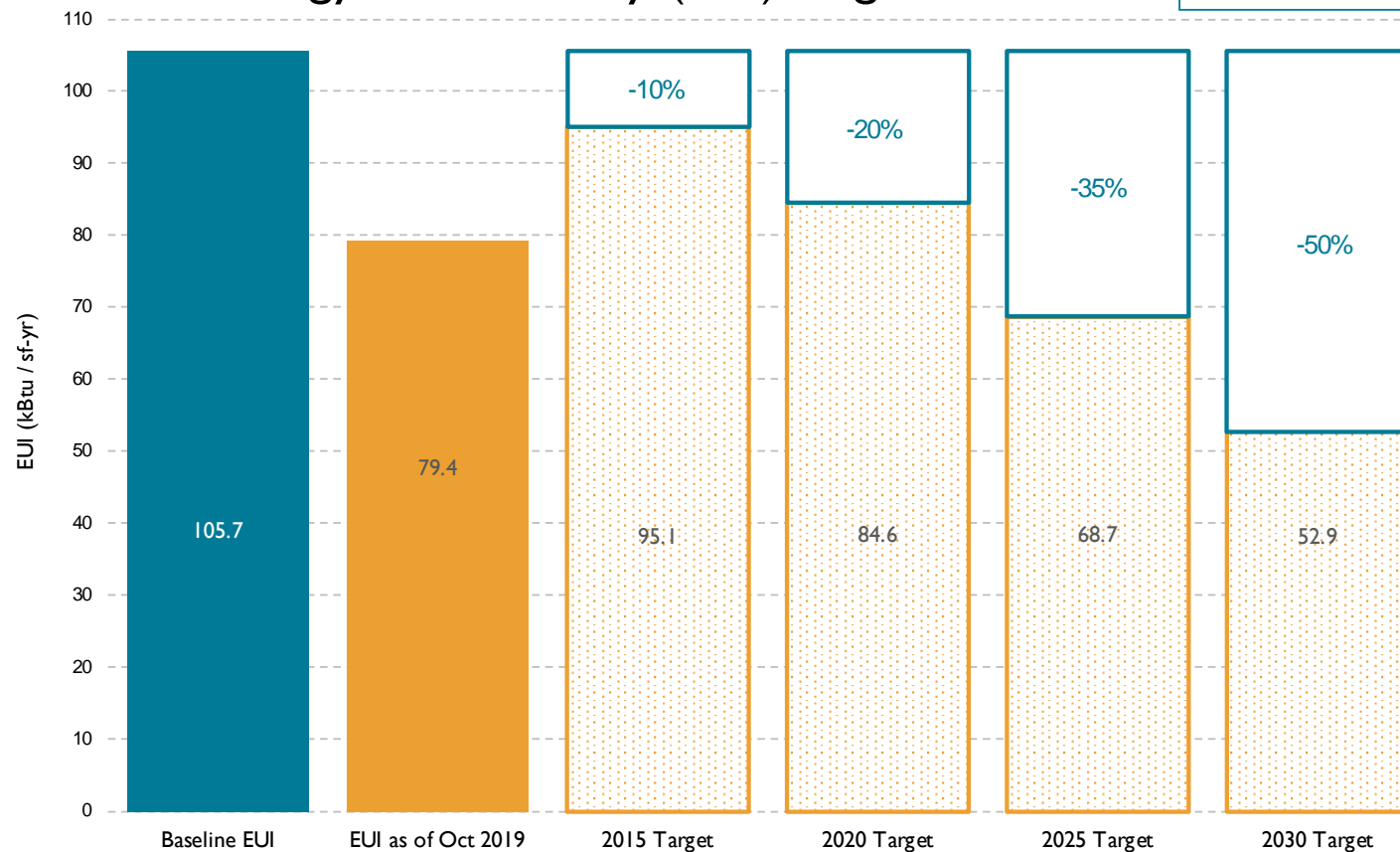


Cleveland 2030 District



Cleveland 2030 District Participating Properties¹ Energy Use Intensity (EUI) Targets

Reduction
25%



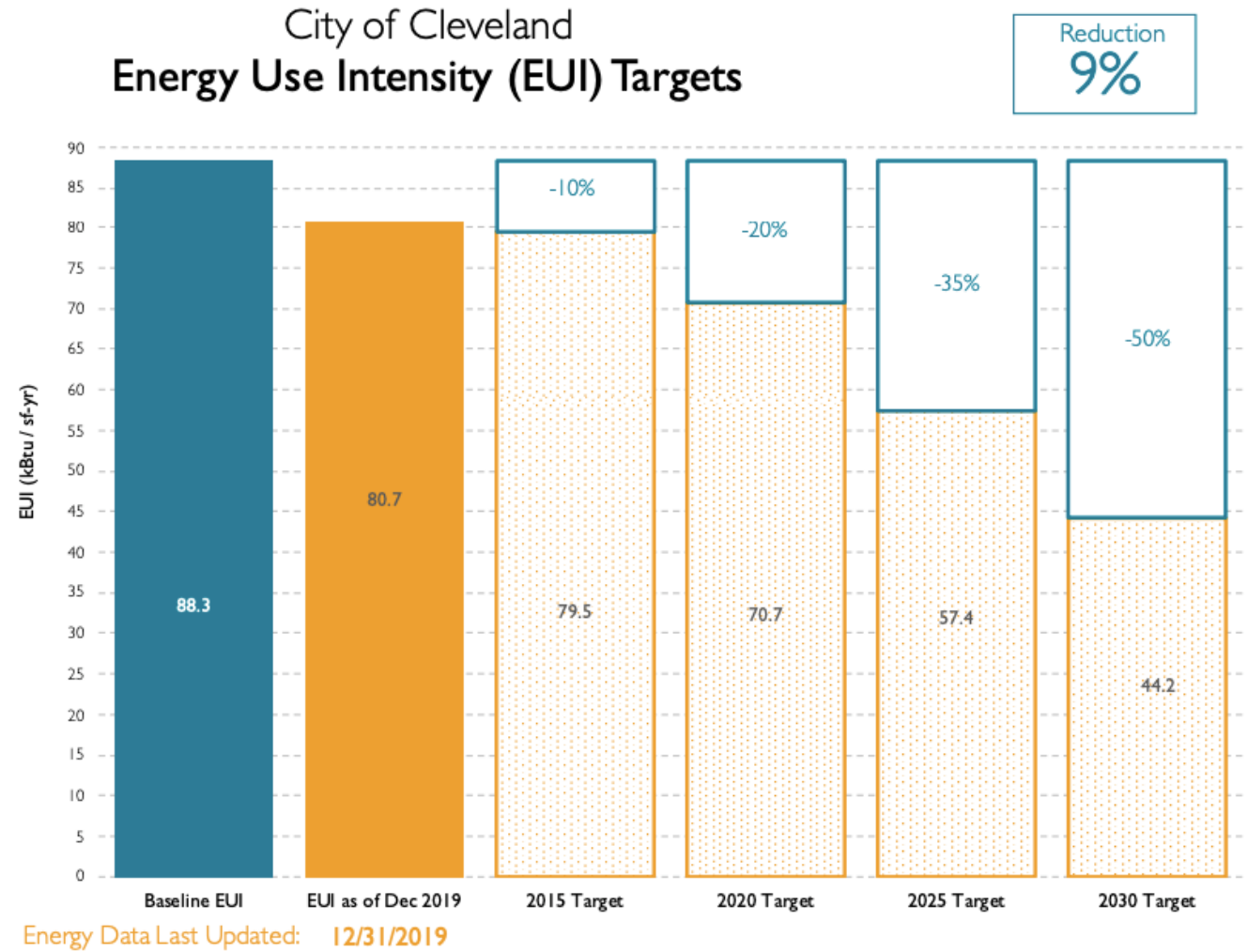
Data Last Updated: 10/31/19

¹Includes C2030D participating properties with accurate and complete Portfolio Manager accounts and National Median EUI values
Baseline set using CBECS 2003

Cleveland 2030 District

City of Cleveland Participation


- 20 Properties
- 1,983,965 sqft





Thank You

Elizabeth Lehman 

216-664-2153 

elehman@city.cleveland.oh.us 

SustainableCleveland.org 