

Existing Building Policy Successes in St. Louis

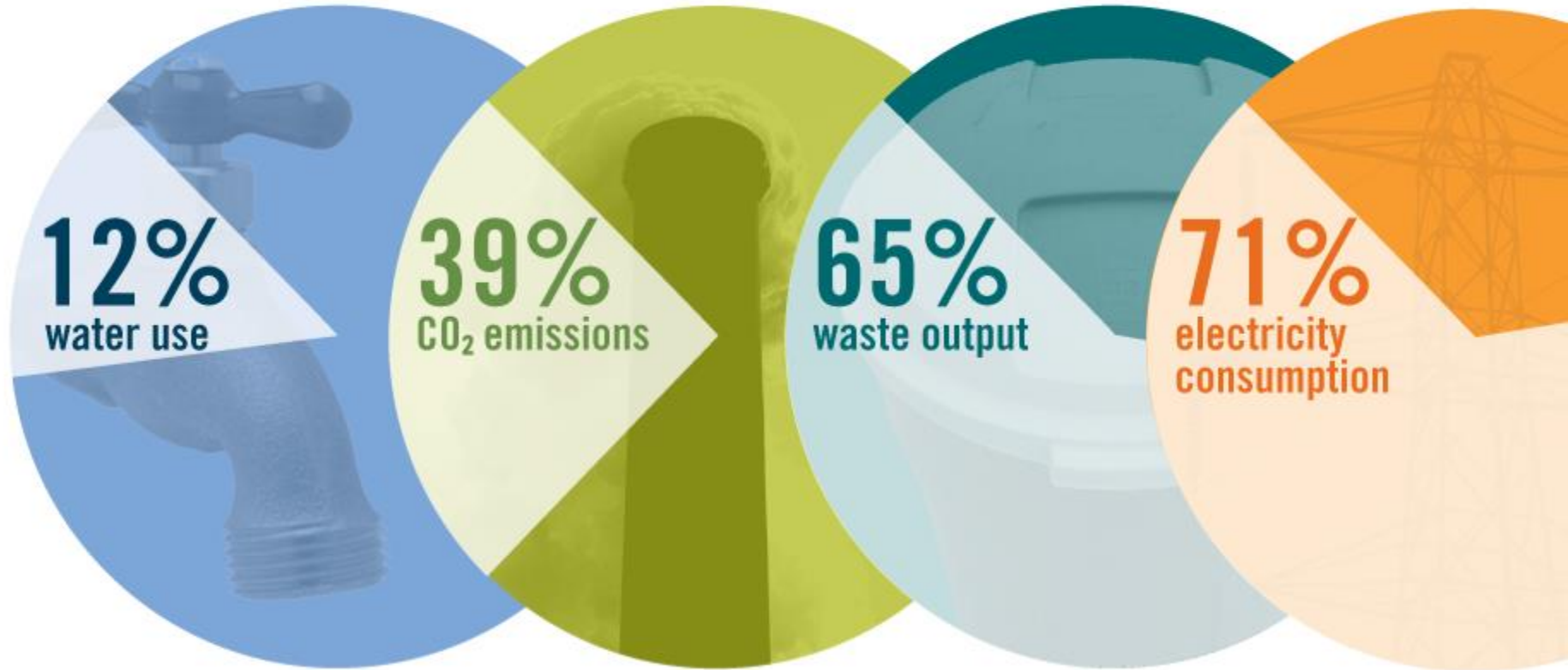


Missouri
Gateway
CHAPTER

GREEN
BUILDINGS
ARE BETTER



Buildings in the US Have a BIG Impact



Building Energy Awareness: Benchmarking Requirements



SUPPORTERS INCLUDE



Building Energy Awareness: Support & Feedback

- Benchmarking 101 Session
- Benchmarking Jams & Help Sessions
- Reporting Checklists & Fact Sheets
- Implementation Advisory Group



Energy Efficiency Checklist

Explore Opportunities to Save Energy

Understand Your Performance

You Can't Manage What You Don't Measure

□ Benchmark Your Building Energy Use

- Energy Benchmarking is the process of tracking your building's energy use and comparing your performance to similar buildings and to past performance.
- Any building can use ENERGY STAR Portfolio Manager, a free, online tool administered by the U.S. Environmental Protection Agency, to benchmark their energy, water and waste performance. Visit www.stlbenchmarking.com to learn more and get assistance.

Invest in Your Building

No-Cost Operational Changes & Low-Cost Improvements

Bloomberg
Philanthropies

American Cities
Climate Challenge

CLIMATE ACTION PLAYBOOK BRIEF

A STRATEGIC BRIEF TO ACCELERATE AND DEEPEN CLIMATE ACTION IN CITIES



The Climate Challenge winning cities are:

Albuquerque	Atlanta	Austin
Boston	Charlotte	Chicago
Cincinnati	Columbus	Denver
Honolulu	Indianapolis	Los Angeles
Minneapolis	Orlando	Philadelphia
Pittsburgh	Portland	Saint Paul
San Antonio	San Diego	San Jose
Seattle	St. Louis	St. Petersburg

Washington, DC

BUILDINGS PATHWAYS



REDUCE
BUILDING
ENERGY USE



INCREASE
RENEWABLE
ENERGY



ELECTRIFY
BUILDINGS



REDUCE
VEHICLE MILES
TRAVELED



ELECTRIFY
VEHICLES

Next Phase: Building Energy Performance Standard







[OUR WORK](#)
[OUR EXPERTS](#)
[OUR STORIES](#)
[GET INVOLVED](#)
[ABOUT US](#)

EXPERT BLOG • STEFAN SCHAFER & MARIA STAMAS

Smaller Cities Like St. Louis Lead on Energy Efficiency

April 20, 2020 Stefan Schaffer & Maria Stamas

St. Louis passed its highly ambitious Building Energy Performance Standard (BEPs) ordinance, making it the fourth jurisdiction in the United States and first in the Midwest to do so. Mayor Lyda Krewson is expected to officially sign the ordinance into law in the coming weeks. With the adoption of this policy, the city will accomplish a major goal in creating more energy-efficient buildings.

What's more, as a city of just over 300,000 residents, St. Louis is setting an example for other cities of all sizes, by demonstrating that it can drive climate action and unlock a wide range of associated benefits for building owners and the entire St. Louis

Building Energy Performance Standard

SUPPORTERS INCLUDE:



Good for the Economy.
Good for the Environment.



EnerGuidance



Energy Resources Group, Inc.



Missouri Interfaith Power & Light



Life Is On



BEPS Policy Elements

What IS the standard?

- Performance metric: Site Energy Use Intensity (EUI)
- Standard will be set no lower than the 65th percentile of site EUI for similar buildings in St. Louis
- Standards finalized by May 4, 2021
- All commercial, institutional, multi-family and municipal buildings that are 50,000 square feet and above must comply.



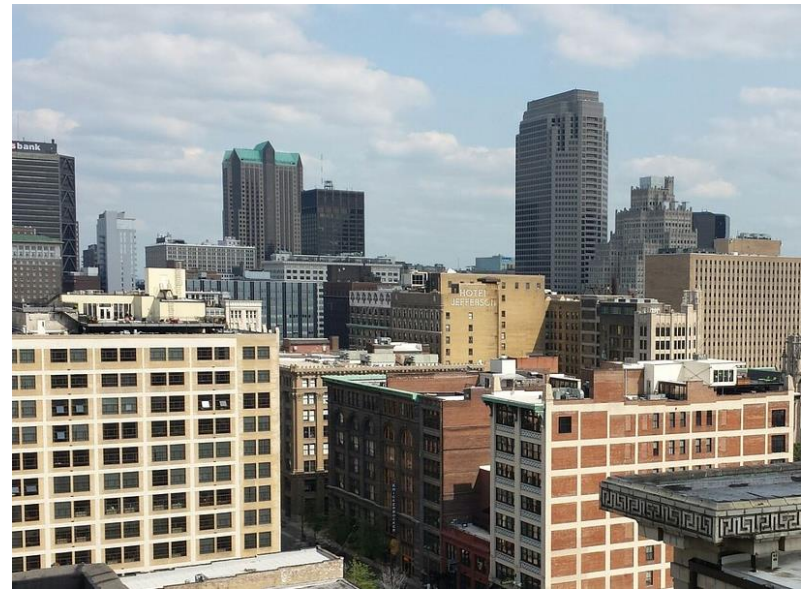
BEPS Policy Elements

- Most buildings will have four years to meet the standard (May 4th, 2025).
- Building owners will use ENERGY STAR Portfolio Manager tool to document compliance with the BEPS as part of the existing annual benchmarking reporting process.
- Data verification will be required when compliance is due.



Unique Elements of BEPS

- Passed unanimously @ City of St. Louis Board of Aldermen at their first ever virtual meeting
- Building Energy Improvement Board will oversee implementation
- No alternative compliance pathways outlined in ordinance, but buildings can present plan to Board for consideration
- Affordable housing & houses of worship have two extra years to comply (May 2027)



BEPS Timeline + Next Steps

Timeline



Learn more about City of St. Louis Benchmarking & BEPS
@ www.stlbenchmarking.com

Thank You!



Emily Andrews
Executive Director
USGBC-Missouri Gateway Chapter
314-577-0854

emily.andrews@mobot.org

www.usgbc-mogateway.org

